

# Q1 2021 Review & Outlook

Glenn Dorsey, CFA<sup>®</sup>, CAIA<sup>®</sup>



# Economic Gauges



Economy



Monetary Policy



Valuations



Investor Sentiment



Interest Rates

The gauges reflect the degree of Clark Capital's positive (forward) or negative (reverse) outlook on the corresponding economic factors.



## Executive Summary

- Global Economies and Earnings Are Rebounding
- Three Positive Gauges, two Negative
- Year End Target for S&P 500 is 4150
- Year End Target for 10-Year Treasury is 1.25% — 2.00%
- Expect More Volatility in 2H of the Year



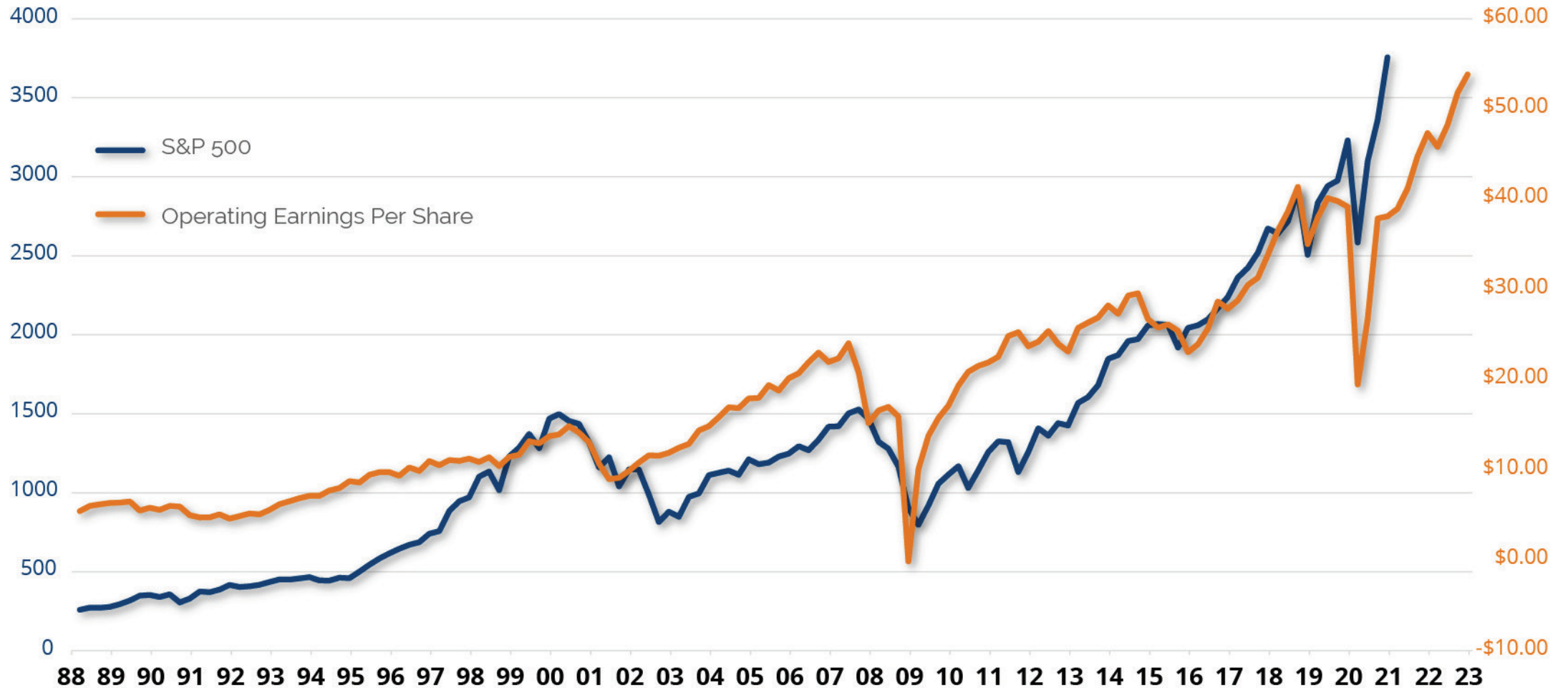
## Why is the Economic Gauge so Positive?

- Housing (leading indicator) is very strong
- Retail sales are at all time highs — consumers in good shape
- Vaccine availability
- Unemployment heading down
- 2021 Forecast is for GDP growth above 5%
- Why does this matter...GDP helps drive earnings



# Earnings Drive Stock Prices

## S&P 500 & Operating Earnings



Source: S&P Dow Jones Indices.

For illustrative purposes only. Projections or other forward looking statements regarding future financial performance of markets are only predictions and actual events or results may differ materially.



Source: S&P Dow Jones Indices.

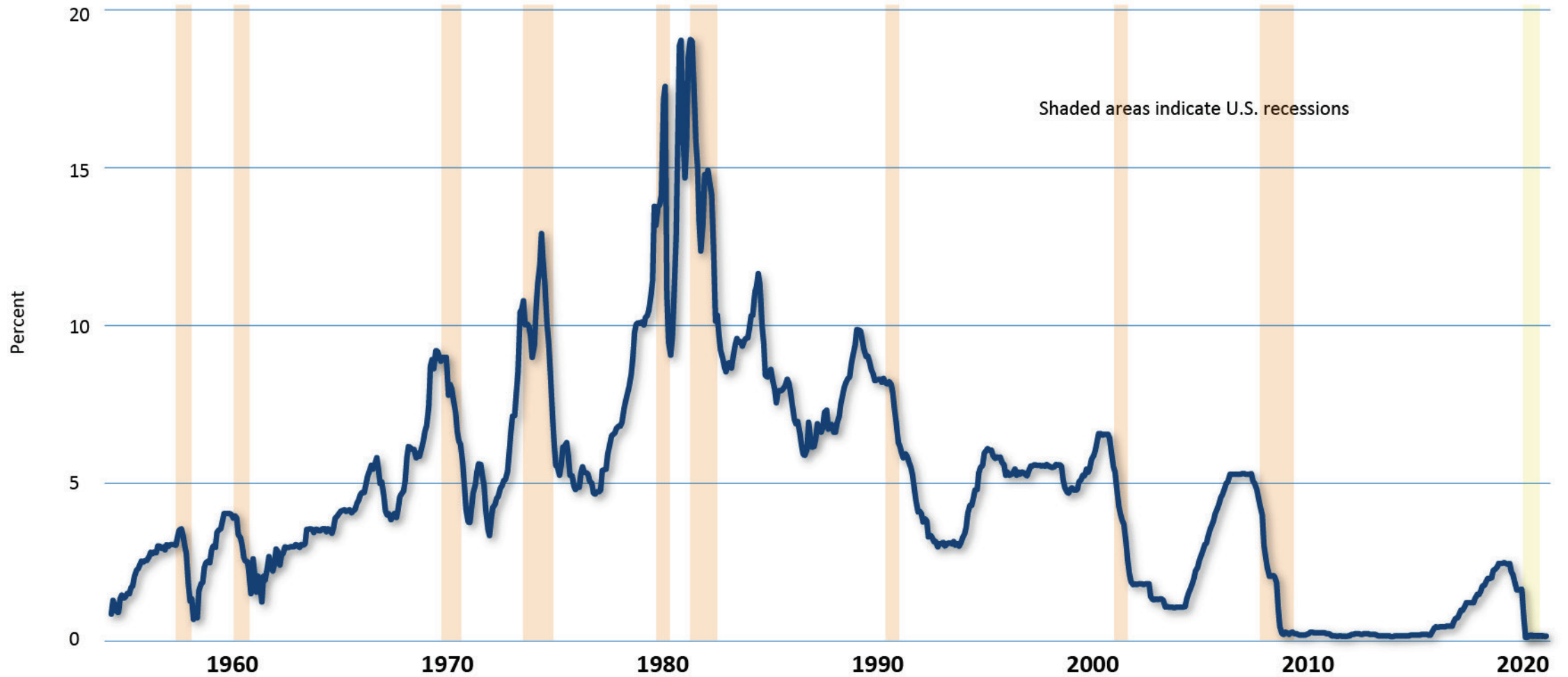
# Why is the Monetary Policy Gauge so Positive?

- Fed in full accommodative mode
- ZIRP in place until 2023
- Quantitative easing still ongoing
- Tapering may happen before rate increases
- Fed can limit increase in longer maturities
- Why does this matter...stocks usually do well when Fed is stimulating



# Fed Still Has Gas Pedal to the Floor

## Effective Federal Funds Rate

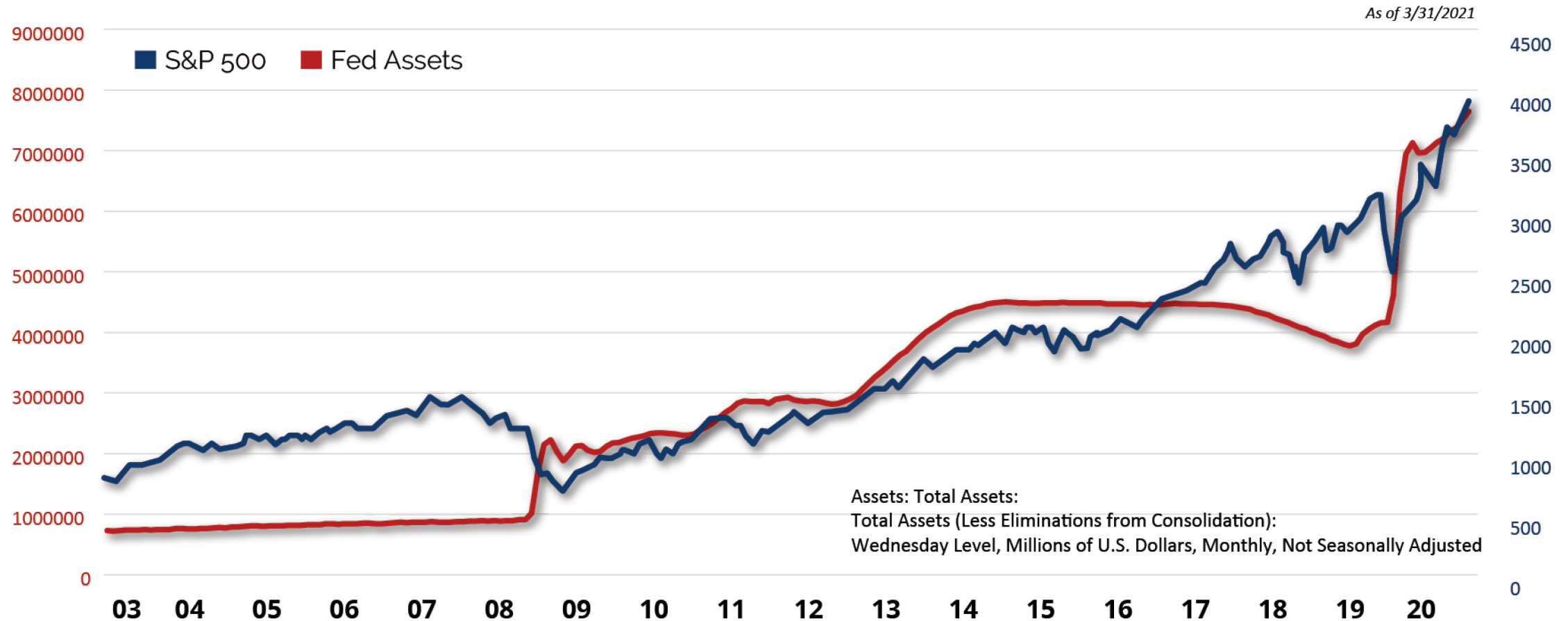


Source: Board of Governors of the Federal Reserve System (US)



# Stocks Have Done Well During Quantitative Easing

## S&P 500 vs Fed Assets



Source: FRED, Board of Governors of the Federal Reserve System (US), Bloomberg





## Why is the Valuation Gauge Slightly Negative?

- Valuations for stocks are above LT averages
- Typically, not great at calling turning points
- Stocks still attractive relative to bonds
- Earnings catching up to stocks
- Why does this matter...stocks still have appreciation potential



# In a Vacuum, Stocks Not Cheap

## S&P 500 Forward vs. Trailing Price/Earnings Ratios

Monthly Data 1983-02-28 to 2021-03-31



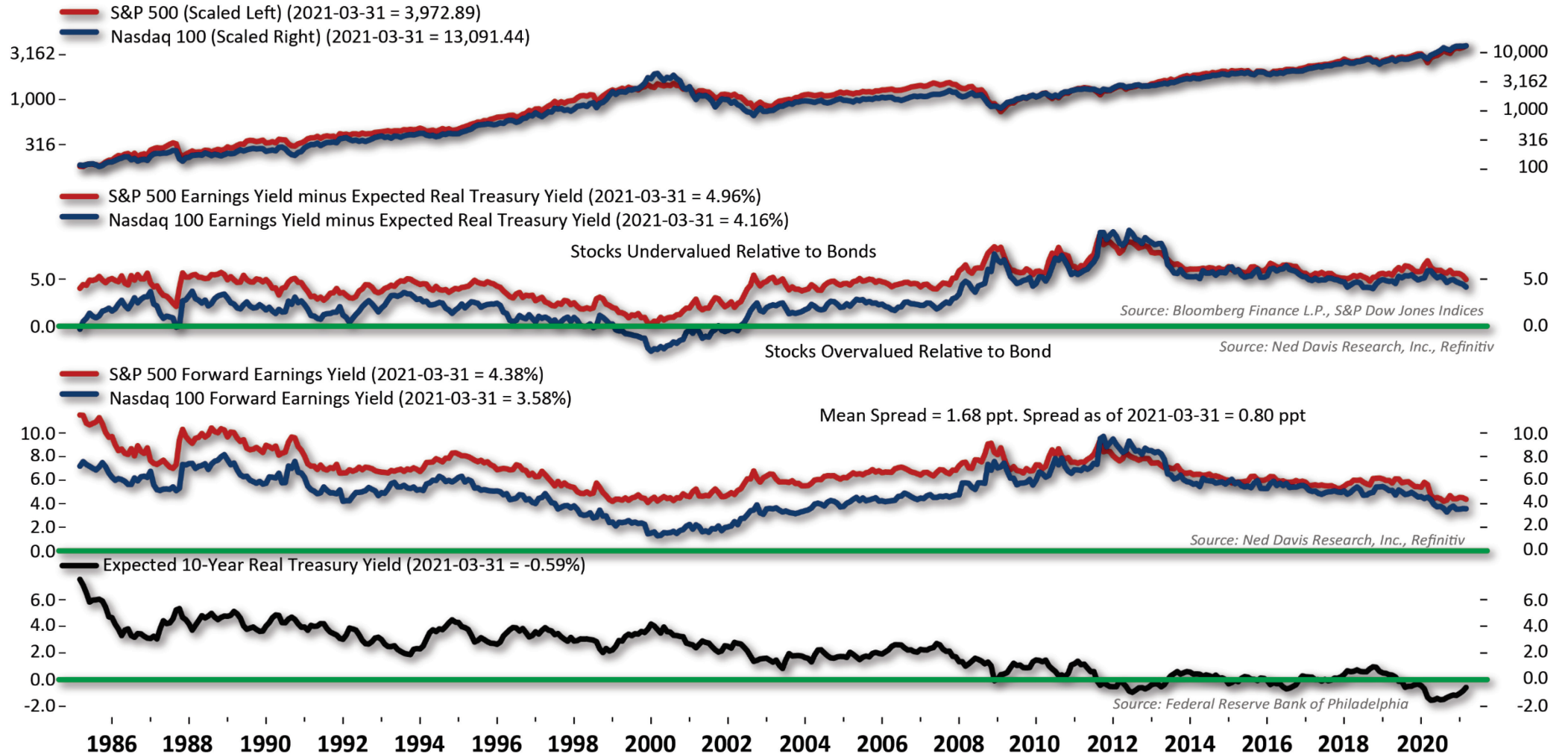
Source: Ned Davis Research



# But Stocks are Attractive When Compared to Bonds

## Earnings Yield minus Real Bond Yield

Monthly 3/31/1985 - 3/31/2021



(B406E)

Source: Ned Davis Research



# Why is the Investor Sentiment Gauge More Negative?

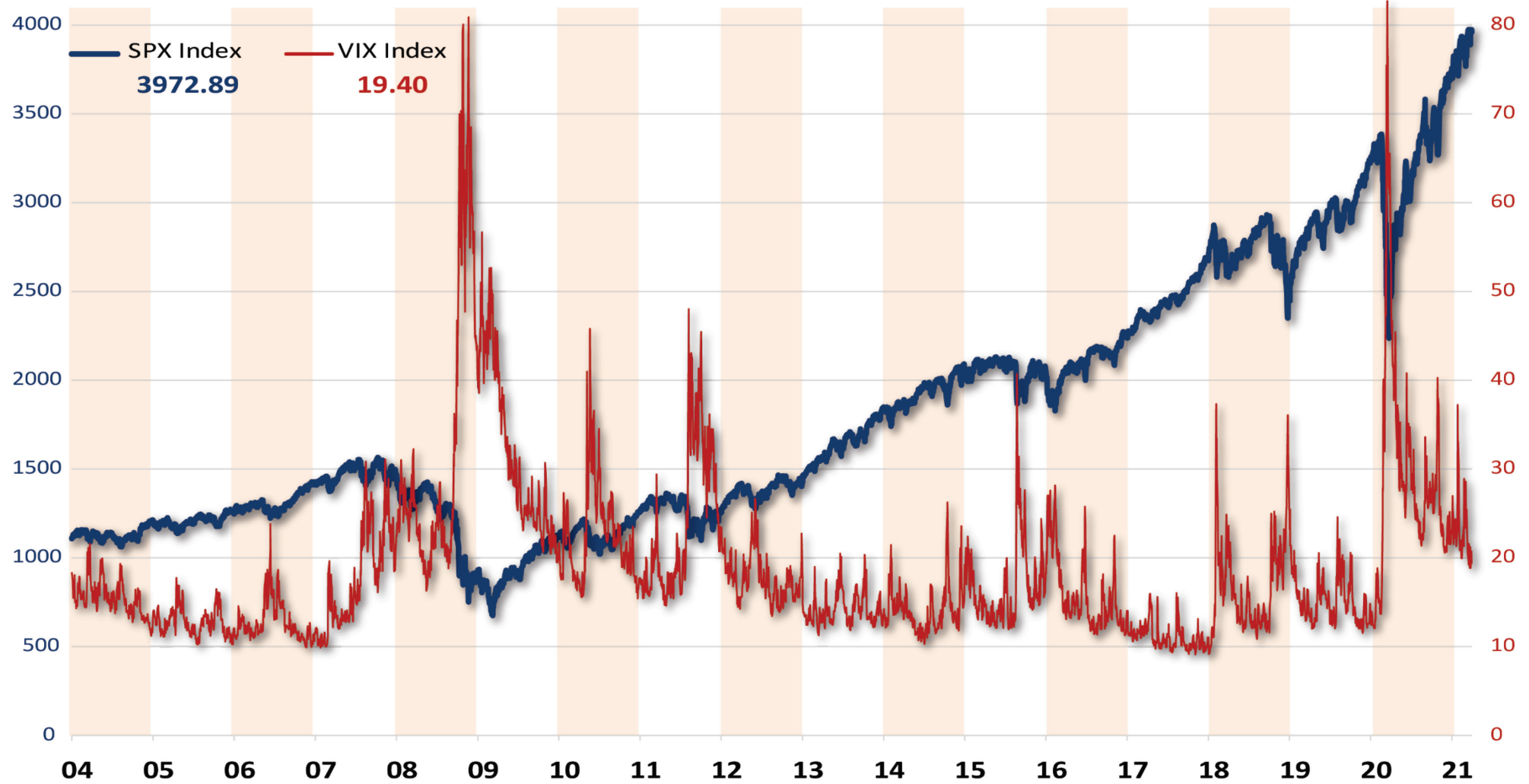
- Evidence of speculation
- Often associated with some near-term risk
- Very sensitive gauge — can change quickly
- VIX now lower than LT average
- Why does this matter...could indicate some short-term weakness



# Investor Sentiment – Volatility Lower

## S&P 500 vs. Volatility

1/1/2004 to 3/31/2021



Source: Bloomberg



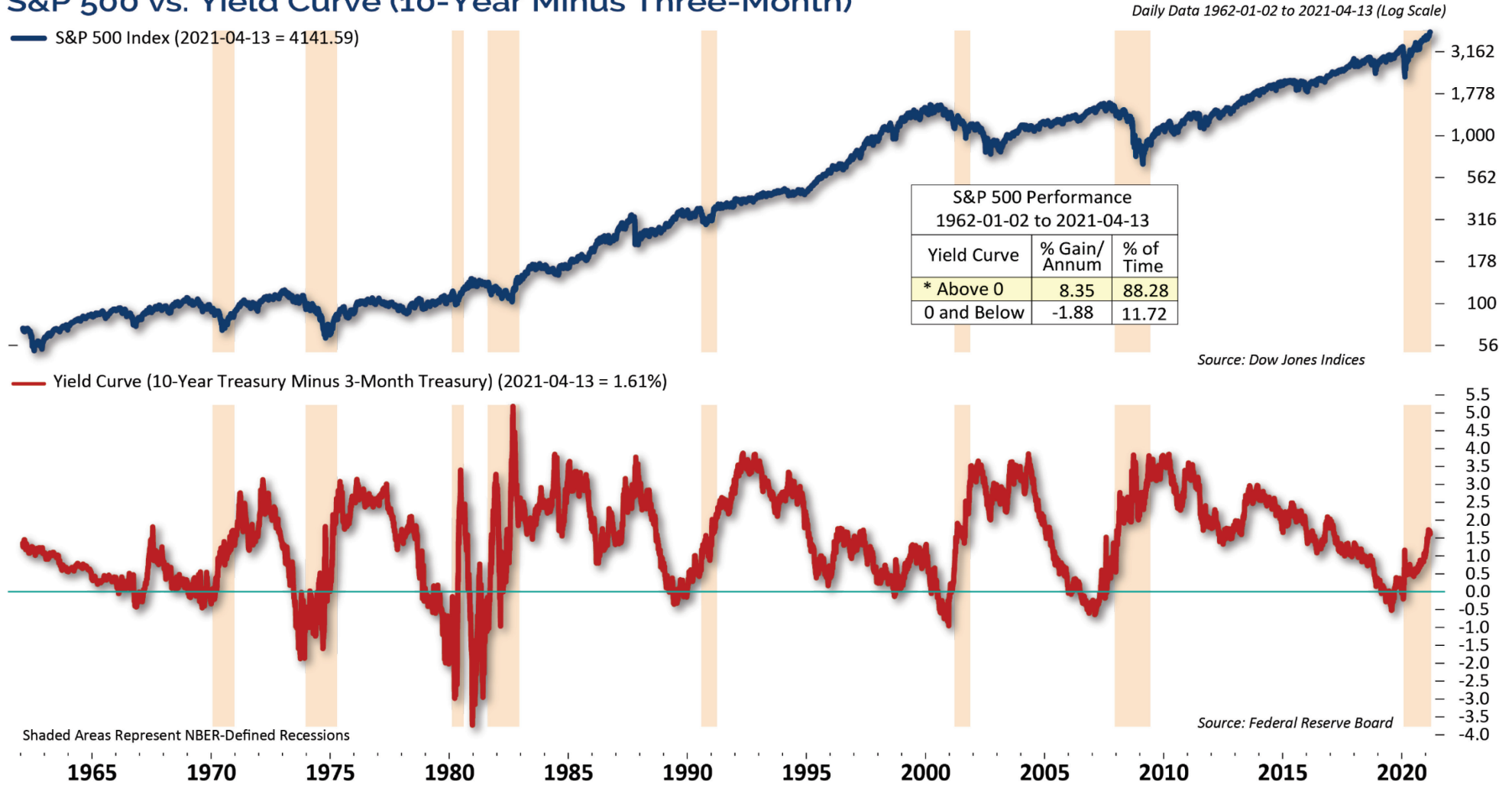
# Why Did We Lower the Interest Rate Gauge?

- The yield on the 10-year Treasury has risen
- Still positive because rates are low and the yield curve is steepening
- Don't expect rates to go too much higher
- Why does this matter...low rates and positively sloped yield curve are usually favorable for stocks



# Yield Curve Steepening

## S&P 500 vs. Yield Curve (10-Year Minus Three-Month)



S890B

Past performance is not indicative of future results.

# Special Topics

- Bonds
- Inflation
- Market Rotation
- Volatility

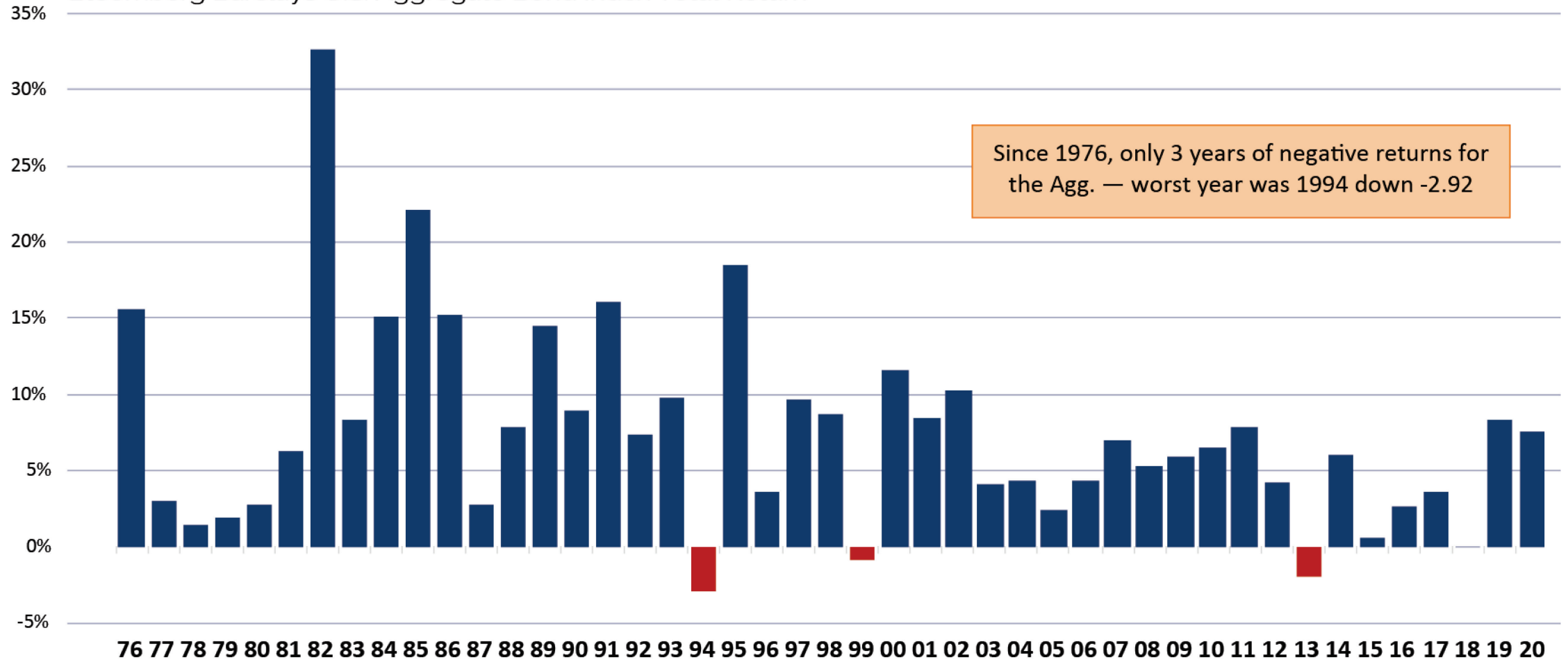




# Why Investors Own Bonds

## A Bond Bear Market Is Not Like a Stock Bear Market

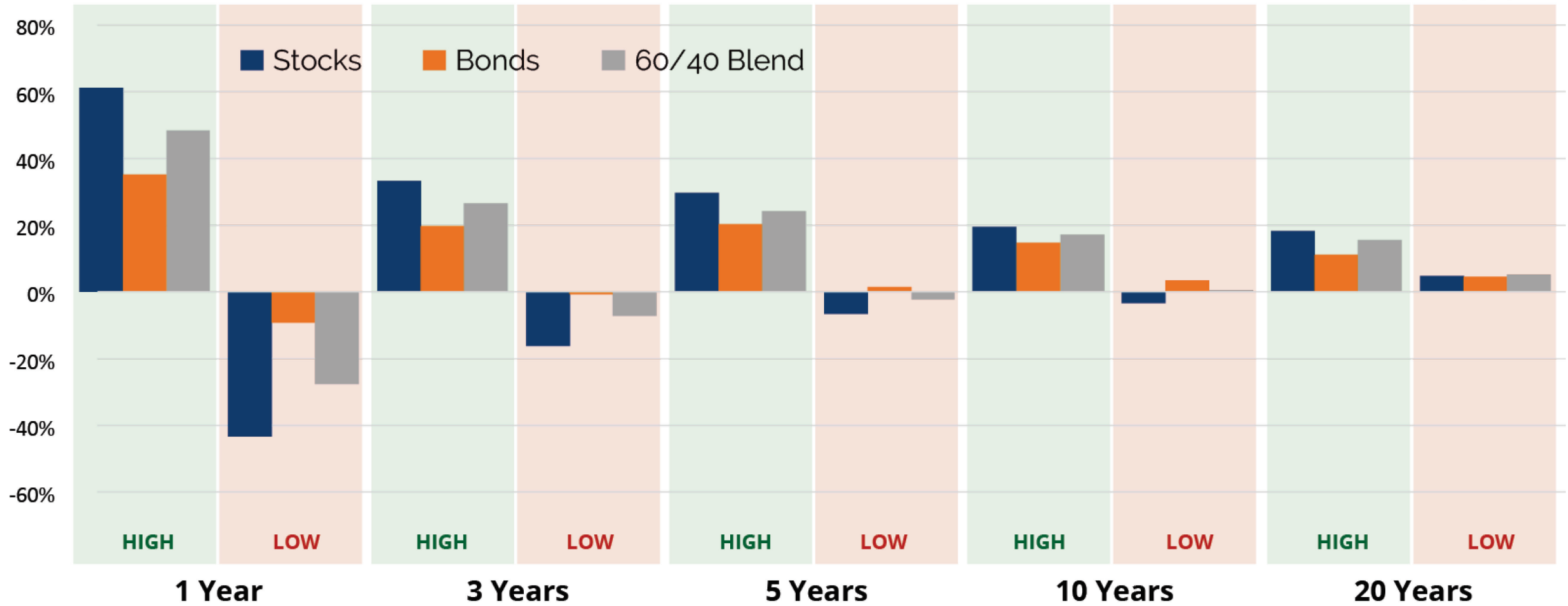
Bloomberg Barclays U.S. Aggregate Bond Index Total Return



# Benefit of Time and Bonds

## High/Low over Time

As of 3/31/2021



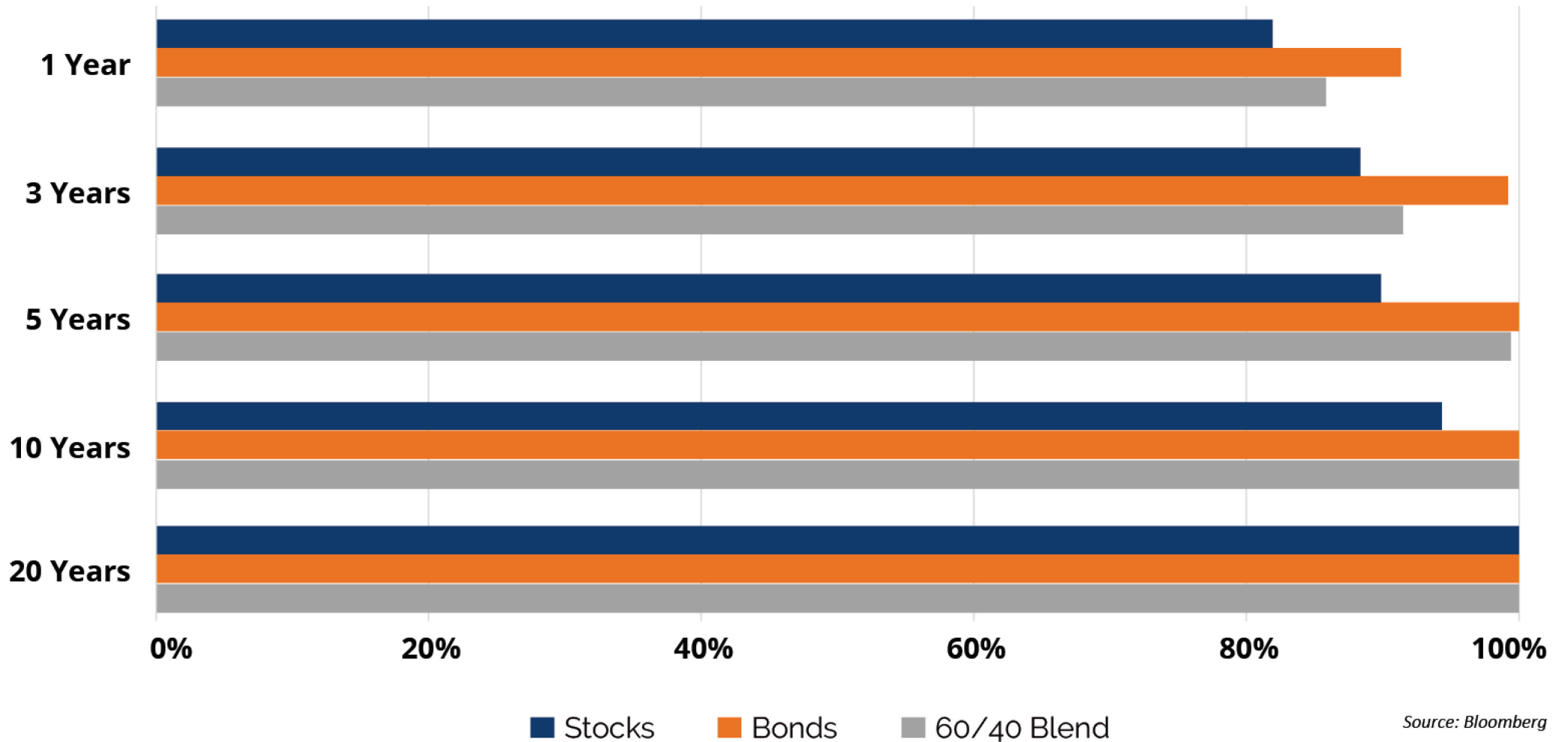
Source: Bloomberg



# Benefit of Time and Bonds

As of 3/31/2021

## Frequency of Positive Returns



# Treasuries Get Hit by Rising Rates...Credit Provides Some Shelter

Rising Rate Periods	10-Year Treasury Rate Increase (bps)*	Bloomberg Barclays 7-10-Year U.S. Treasuries**	Bloomberg Barclays U.S. Corporate Investment Grade***	Bloomberg Barclays U.S. Corporate High Yield****
8/4/2020-3/31/2021	122	-7.38%	-3.26%	7.04%
09/07/2017-11/08/2018	119	-5.29%	-2.73%	2.78%
07/05/2016-03/13/2017	125	-7.01%	-2.10%	8.73%
07/25/2012-12/31/2013	161	-7.03%	0.53%	14.71%
10/06/2010-04/08/2011	118	-5.72%	-1.21%	7.28%
12/18/2008-12/31/2009	177	-6.42%	21.05%	73.30%
06/02/2005-06/28/2006	136	-4.28%	-2.72%	5.49%
10/05/1998-01/20/2000	263	-8.11%	-3.02%	3.77%
01/18/1996-07/05/1996	153	-5.29%	-4.19%	2.78%
10/15/1993-11/07/1994	286	-7.01%	-8.11%	8.73%

\*10-Year Treasury Constant Maturity Rate.

\*\*Cumulative Return of Bloomberg Barclays U.S.

Aggregate Government-Treasury7-10, \*\*\*Cumulative

Return of Bloomberg Barclays U.S. Corporate

Investment Grade, \*\*\*\*Cumulative Return of

Bloomberg Barclays U.S. Aggregate Credit Corporate HY.

Past performance is no guarantee of future results.

Investors cannot directly invest in an index and

unmanaged index returns do not reflect any fees,

expenses or sales charges.



# Inflation — Not the End of the World

Stocks Have Done Reasonably Well During Inflationary Periods

	Stocks	Bonds	Cash	Inflation
<b>1930s</b>	-0.9%	4.0%	1.0%	-2.1%
<b>1940s</b>	8.5%	2.5%	0.5%	5.5%
<b>1950s</b>	19.5%	0.8%	2.0%	2.0%
<b>1960s</b>	7.7%	2.4%	4.0%	2.3%
<b>1970s</b>	5.9%	5.4%	6.3%	7.1%
<b>1980s</b>	17.3%	12.0%	8.8%	5.5%
<b>1990s</b>	18.0%	7.4%	4.8%	3.0%
<b>2000s</b>	-1.0%	6.3%	2.7%	2.6%
<b>2010s</b>	13.4%	4.1%	0.5%	1.8%



# Inflation — Stocks and Corporate Bonds Have Done OK

... And Have Outpaced Bonds and Cash

## Average Return in Years with Rising Inflation

S&P 500 (includes dividends)	3-month T Bill	U.S. Treasury Bond	Baa Corporate Bond
<b>7.4%</b>	<b>4.7%</b>	<b>5.3%</b>	<b>5.9%</b>



# The Anatomy of a Rotation

Domestic Equity	2020	3 Months	7 Months
S&P 500	18.40%	6.17%	14.55%
S&P 500 Equal Weighted	12.83%	11.49%	28.72%
Russell 1000	20.96%	5.91%	16.01%
Russell 2000	19.96%	12.70%	43.11%
Russell 1000 Growth	38.49%	0.94%	7.14%
Russell 1000 Value	2.80%	11.26%	26.17%
NASDAQ Composite	44.92%	2.95%	12.97%
FANMAG	54.85%	2.51%	2.40%

	FB	AMZN	NFLX	MSFT	AAPL	GOOGL
9/1/2020 - 3/31/2021	0.5%	-10.3%	-1.5%	4.5%	-5.3%	26.6%

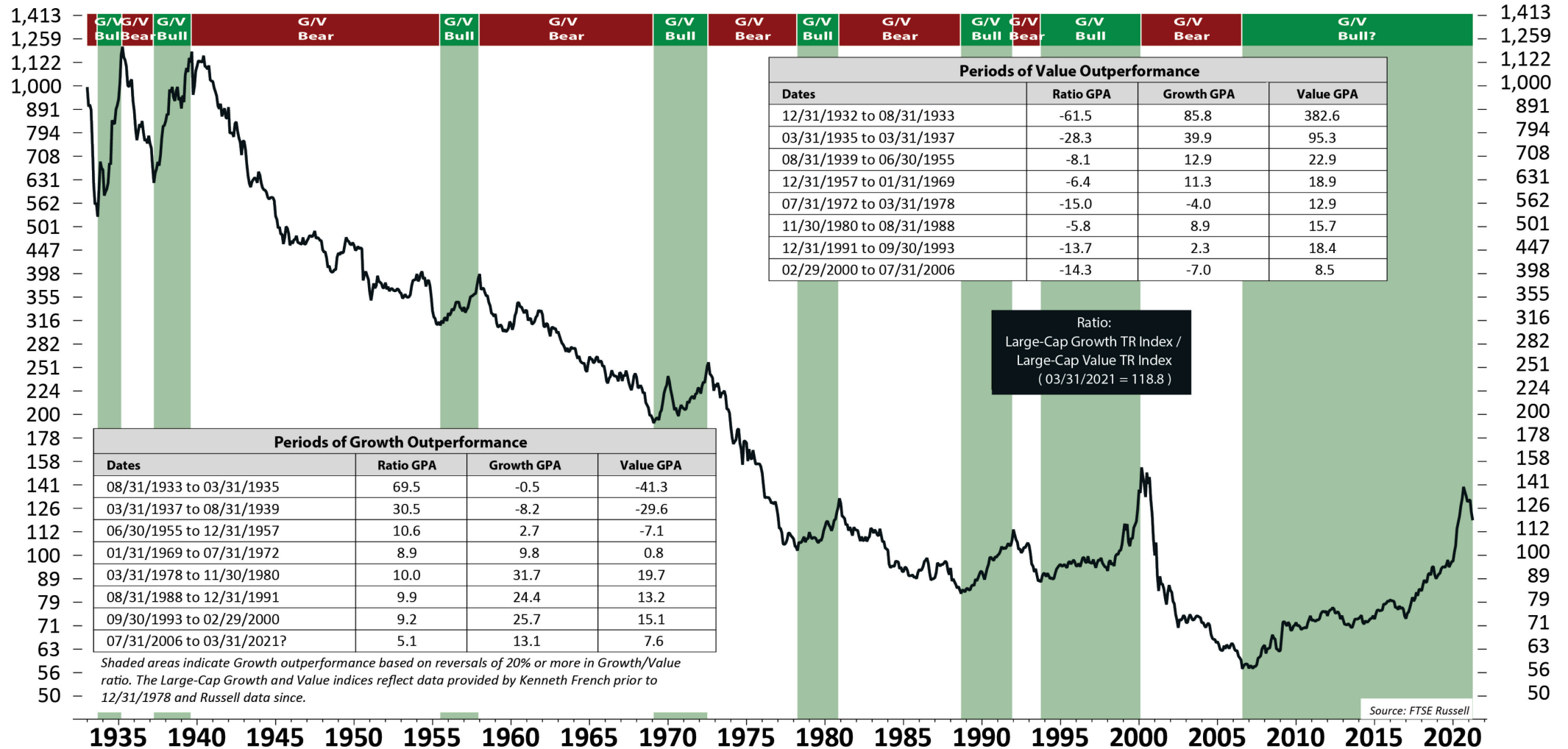
Past performance is not indicative of future results. This is not a recommendation to buy or sell a particular security. Please see attached disclosures.



# Growth vs Value

## Long-Term Trends in Large-Cap Growth/Value Relative Performance

Monthly Data 1932-12-31 to 2021-03-31 (Log Scale)



AA067A

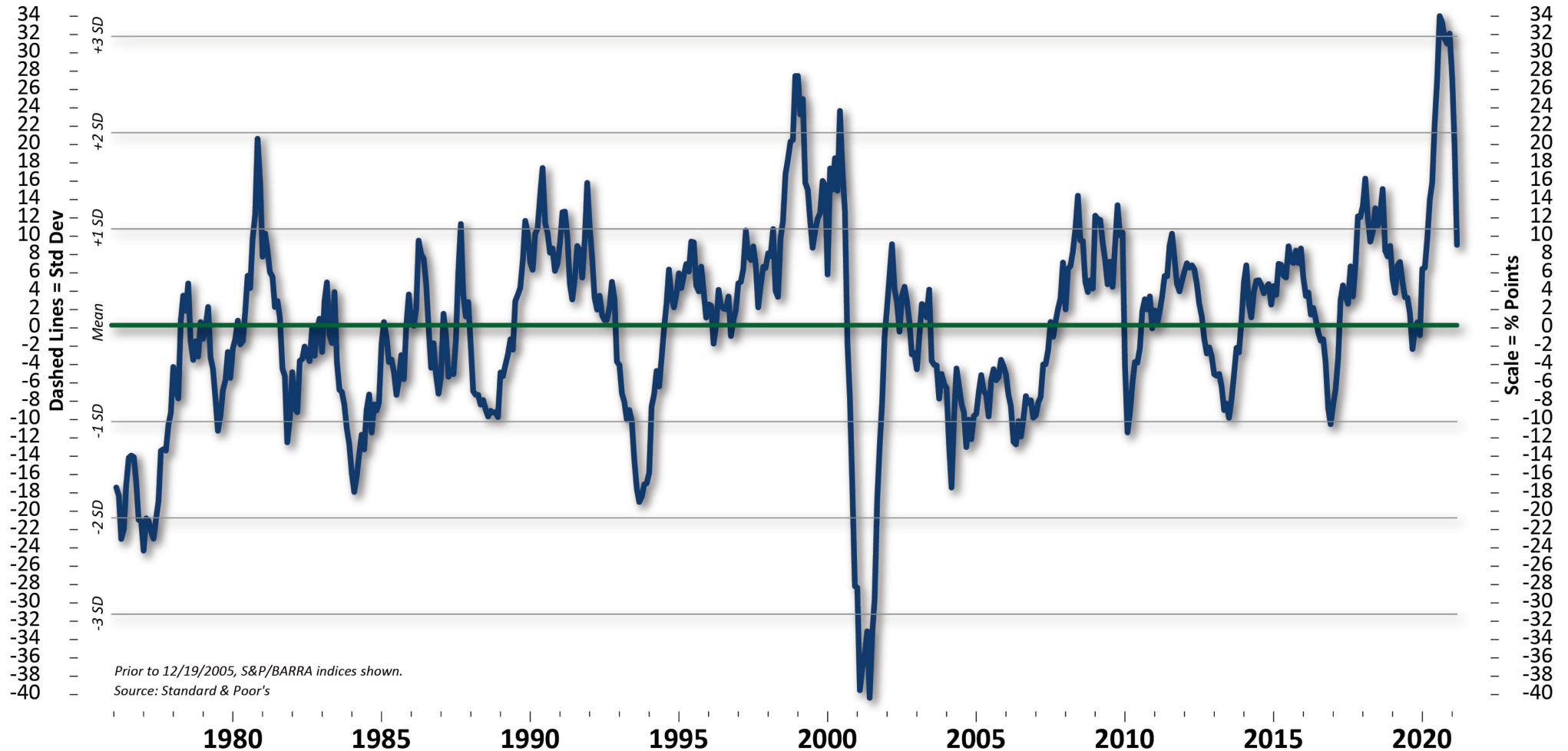
Source: Ned Davis Research



# Growth vs Value

S&P 500/Citigroup Growth Total Return Index (Y/Y) minus  
S&P 500/Citigroup Value Total Return Index (Y/Y) — Monthly

Monthly 12/31/1975 - 03/31/2021



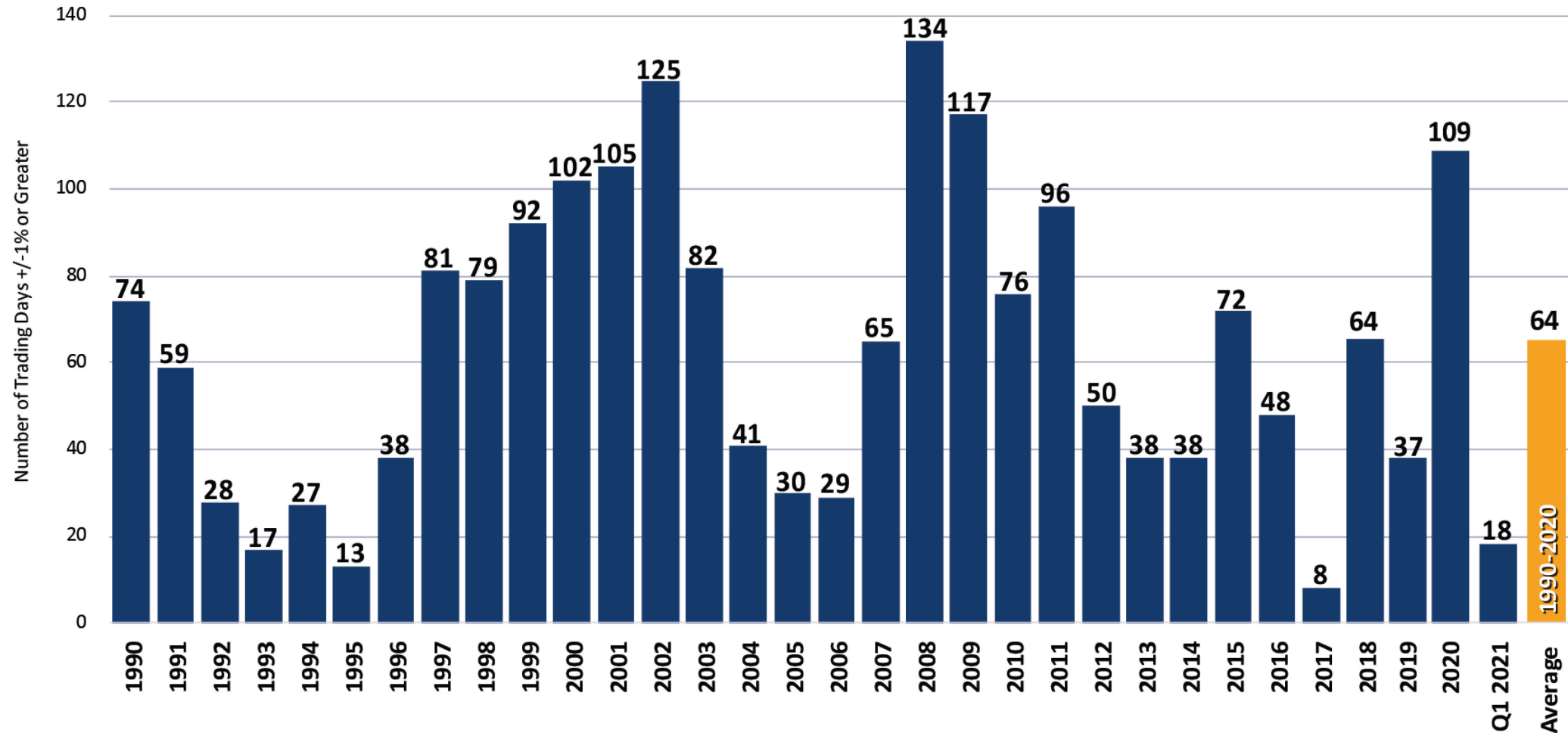
(AA062)

Source: Ned Davis Research



# Volatility Has Risen Dramatically This Year

Total Trading Days Greater than +/-1% Change



# Worst Trades Ever? “Time In,” Not “Timing”

If you bought in at the market highs just prior to a major downturn...

S&P 500 Index* Purchase Date	Return through 3/31/2021
March 24, 2000	160%
September 10, 2001	264%
October 9, 2007	154%

\*S&P 500 price only (not factoring in dividends). Economic and market forecasts presented herein reflect a series of assumptions and judgments as of the date of this presentation and are subject to change without notice. Forward-looking statements cannot be guaranteed.



# Q1 2021 Review

Domestic Equity		2020	Q1 2021	7 Months
	S&P 500	18.40%	6.17%	14.55%
	S&P 500 Equal Weighted	12.83%	11.49%	28.72%
	Russell 3000	20.89%	6.35%	17.53%
	Russell 2000	19.96%	12.70%	43.11%
	Russell 1000 Value	2.80%	11.26%	26.17%
	Russell 1000 Growth	38.49%	0.94%	7.14%
International Equity				
	MSCI Emerging Market	18.31%	2.29%	20.48%
	MSCI All Country World (ex US)	10.65%	3.49%	18.10%
Fixed Income				
	BBgBarc U.S. Aggregate Bond	7.51%	-3.37%	-2.77%
	BBgBarc U.S. Treasury	8.00%	-4.25%	-4.91%
	BBgBarc U.S. Corporate	9.89%	-4.65%	-2.02%
	BBgBarc U.S. Corporate High Yield	7.11%	0.85%	6.25%
	BBgBarc Municipal	5.21%	-0.35%	1.48%

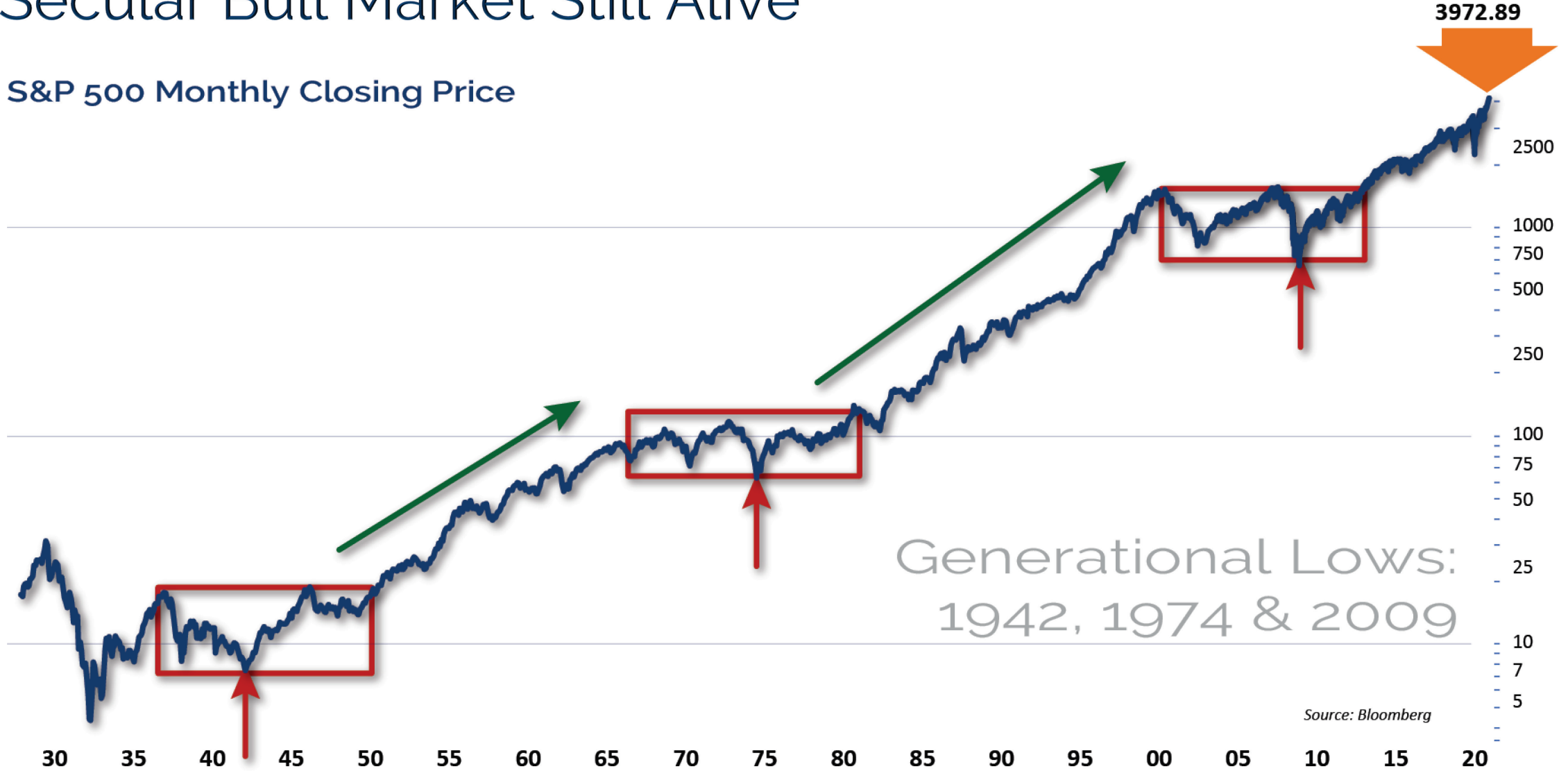
Past performance is not indicative of future results. This is not a recommendation to buy or sell a particular security. Please see attached disclosures.



# Secular Bull Market Still Alive

1/1/1928 to 3/31/2021

## S&P 500 Monthly Closing Price



Generational Lows:  
1942, 1974 & 2009

Source: Bloomberg



Q&A



# Disclosure

The views expressed are those of the author(s) and do not necessarily reflect the views of Clark Capital Management Group. The opinions referenced are as of the date of publication and are subject to change due to changes in the market or economic conditions and may not necessarily come to pass. There is no guarantee of the future performance of any Clark Capital investment portfolio. Material presented has been derived from sources considered to be reliable, but the accuracy and completeness cannot be guaranteed. Nothing herein should be construed as a solicitation, recommendation or an offer to buy, sell or hold any sectors or securities, other investments or to adopt any investment strategy or strategies. For educational use only. This information is not intended to serve as investment advice. This material is not intended to be relied upon as a forecast or research. The investment or strategy discussed may not be suitable for all investors. Investors must make their own decisions based on their specific investment objectives and financial circumstances. Past performance does not guarantee future results.

This document may contain certain information that constitutes forward-looking statements which can be identified by the use of forward-looking terminology such as "may," "expect," "will," "hope," "forecast," "intend," "target," "believe," and/or comparable terminology (or the negative thereof). No assurance, representation, or warranty is made by any person that any of Clark Capital's assumptions, expectations, objectives, and/or goals will be achieved. Nothing contained in this document may be relied upon as a guarantee, promise, assurance, or representation as to the future.

Clark Capital Management Group, Inc. reserves the right to modify its current investment strategies and techniques based on changing market dynamics or client needs. The information provided in this report should not be considered a recommendation to purchase or sell any particular security, sector or industry. There is no assurance that any securities, sectors or industries discussed herein will be included in or excluded from an account's portfolio. It should not be assumed that any of the investment recommendations or decisions we make in the future will be profitable or will equal the investment performance of the securities discussed herein.

Clark Capital Management Group, Inc. is an investment adviser registered with the U.S. Securities and Exchange Commission. Registration does not imply a certain level of skill or training. More information about Clark Capital's advisory services can be found in its Form ADV which is available upon request.

Client account values will fluctuate and may be worth more or less than the amount invested. Clients should not rely solely on any performance presented herein or any other performance illustrations when making investment decisions. The actual returns experienced by individual clients will differ due to many factors including, but not limited to, their individual investments and fees, individual client restrictions, and the timing of investments and cash flows. It should not be assumed that any of the investment decisions made in the future will be profitable.



# Benchmark Descriptions

The S&P 500 measures the performance of the 500 leading companies in leading industries of the U.S. economy, capturing 75% of U.S. equities.

The Russell 1000 Value Index measures the performance of the large-cap value segment of the U.S. equity universe. It includes those Russell 1000 companies with lower price-to-book ratios and lower expected growth values.

The Russell 1000 Growth Index measures the performance of the large-cap growth segment of the U.S. equity universe. It includes those Russell 1000 Index companies with higher price-to-book ratios and higher forecasted growth values.

The Russell 2000 Index measures the performance of the 2000 smallest U.S. companies based on total market capitalization in the Russell 3000, which represents approximately 10% of Russell 3000 total market capitalization.

The Russell 3000 Index measures the performance of the 3000 largest U.S. companies based on total market capitalization, which represents approximately 98% of the investable U.S. equity market.

The MSCI Emerging Markets Index captures large and mid cap representation across 26 Emerging Markets covering approximately 85% of the free float-adjusted market capitalization in each country..

The MSCI ACWI ex USA Index captures large and mid cap representation across 22 of 23 Developed Markets countries, excluding the US, and 26 Emerging Markets countries covering approximately 85% of the global equity opportunity set outside the US.

BBgBarc U.S. Aggregate Bond Index covers the U.S. investment-grade fixed-rate bond market, including government and credit securities, agency mortgage pass-through securities, asset-backed securities and commercial mortgage-based securities. To qualify for inclusion, a bond or security must have at least one year to final maturity, and be rated investment grade Baa3 or better, dollar denominated, non-convertible, fixed rate and publicly issued.

The BBgBarc US Treasury Index measures US dollar-denominated, fixed-rate, nominal debt issued by the US Treasury. Treasury bills are excluded by the maturity constraint but are part of a separate Short Treasury Index. STRIPS are excluded from the index because their inclusion would result in double-counting. The US Treasury Index is a component of the US Aggregate, US Universal, Global Aggregate and Global Treasury Indices.

The BBgBarc US Corporate Bond Index measures the investment grade, fixed-rate, taxable corporate bond market. It includes USD-denominated securities publicly issued by US and non-US industrial, utility and financial issuers. The US Corporate Index is a component of the US Credit and US Aggregate Indices, and provided the necessary inclusion rules are met, US Corporate Index securities also contribute to the multi-currency Global Aggregate Index.

The BBgBarc U.S. Corporate High-Yield Index covers the U.S. dollar-denominated, non-investment

grade, fixed-rate, taxable corporate bond market. Securities are classified as high-yield if the middle rating of Moody's, Fitch, and S&P is Ba1/BB+/BB+ or below.

The BBgBarc U.S. Municipal Index covers the USD-denominated long-term tax-exempt bond market. The index has four main sectors: state and local general obligation bonds, revenue bonds, insured bonds and prerefunded bonds.

The S&P 500 Dividend Aristocrats includes stocks with a float-adjusted market capitalization of at least \$3 billion and an average trading volume of at least \$5 million, in addition to consistently increasing dividend payments. The index typically contains 40 to 50 companies.

The S&P Equal Weight Index is based on the S&P 500. All index constituents are members of the S&P 500 and follow the eligibility criteria for that index. The S&P EWI is maintained in accordance with the index methodology of the S&P 500, which measures 500 leading companies in leading U.S. industries. The S&P EWI measures the performance of the same 500 companies, in equal weights. As such, sector exposures in the S&P EWI will differ.

The S&P 500® Enhanced Value – Lowest Quintile Index is designed to measure the performance of the 100 lowest-ranked stocks in the S&P 500 based on value score. Value scores are calculated using three fundamental measures: book value-to-price, earnings-to-price, and sales-to-price.

The S&P 500 Enhanced Value Index is designed to measure the performance of the top 100 stocks in the S&P 500® with attractive valuations based on "value scores" calculated using three fundamental measures: book value-to-price, earnings-to-price, and sales-to-price.

The Dow Jones Industrial Average is the most widely used indicator of the overall condition of the stock market, a price-weighted average of 30 actively traded blue chip stocks, primarily industrials. The 30 stocks are chosen by the editors of the Wall Street Journal (which is published by Dow Jones & Company), a practice that dates back to the beginning of the century. The Dow is computed using a price-weighted indexing system, rather than the more common market cap-weighted indexing system.

The NASDAQ Composite is the market capitalization-weighted index of over 3,300 common equities listed on the Nasdaq stock market. The composition of the NASDAQ Composite is heavily weighted towards information technology companies.

The Nasdaq 100 Index is a basket of the 100 largest, most actively traded U.S. companies listed on the Nasdaq stock exchange. The index includes companies from various industries except for the financial industry, like commercial and investment banks.

Index returns include the reinvestment of income and dividends. The returns for these unmanaged indexes do not include any transaction costs, management fees or other costs. It is not possible to make an investment directly in any index.

The volatility (beta) of an account may be greater or less than its respective benchmark.

